



Great Western Mining Corporation PLC
Project Presentation
14 May 2019

Disclaimer

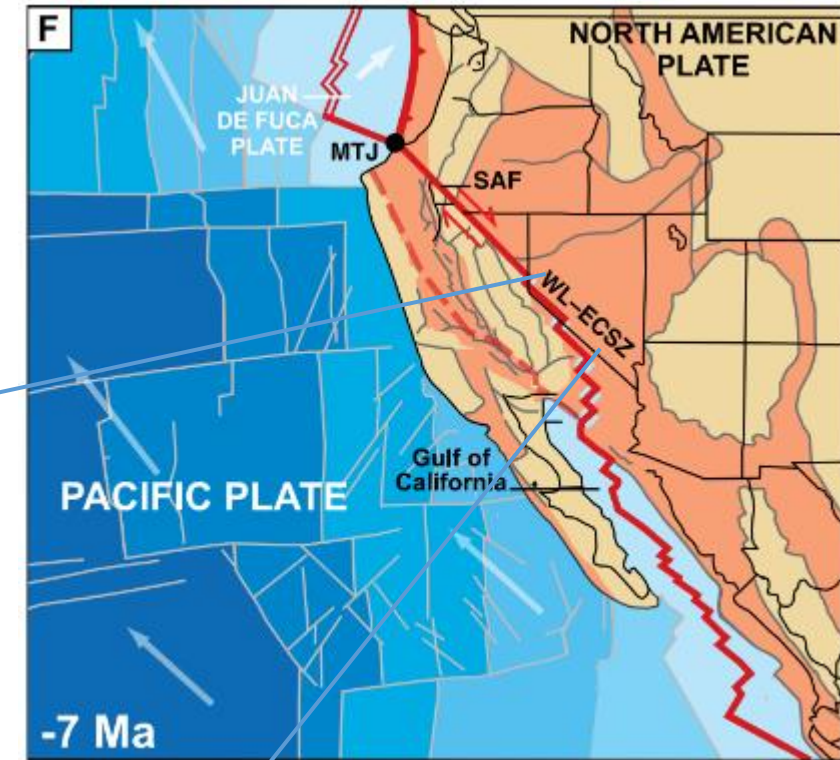
THESE PRESENTATION MATERIALS WHICH HAVE BEEN PREPARED BY GREAT WESTERN MINING CORPORATION PLC (“THE COMPANY”) ARE FOR INFORMATION PURPOSES ONLY AND HAVE NOT BEEN APPROVED BY THE LONDON STOCK EXCHANGE, EURONEXT DUBLIN OR THE FINANCIAL CONDUCT AUTHORITY. THESE PRESENTATION MATERIALS DO NOT CONSTITUTE AN OFFER OR INVITATION TO SELL, ALLOT OR ISSUE, OR ANY SOLICITATION OF OR INDUCEMENT TO ENTER INTO ANY OFFER TO PURCHASE OR SUBSCRIBE FOR ANY SECURITIES, AND NEITHER THE PRESENTATION MATERIALS NOR ANYTHING CONTAINED THEREIN NOR THE FACT OF THEIR DISTRIBUTION SHALL FORM THE BASIS OF, OR BE RELIED UPON, IN CONNECTION WITH OR ACT AS ANY INDUCEMENT TO ENTER INTO ANY CONTRACT OR COMMITMENT WHATSOEVER WITH THE COMPANY.

Great Western – Copper and Gold play in Nevada

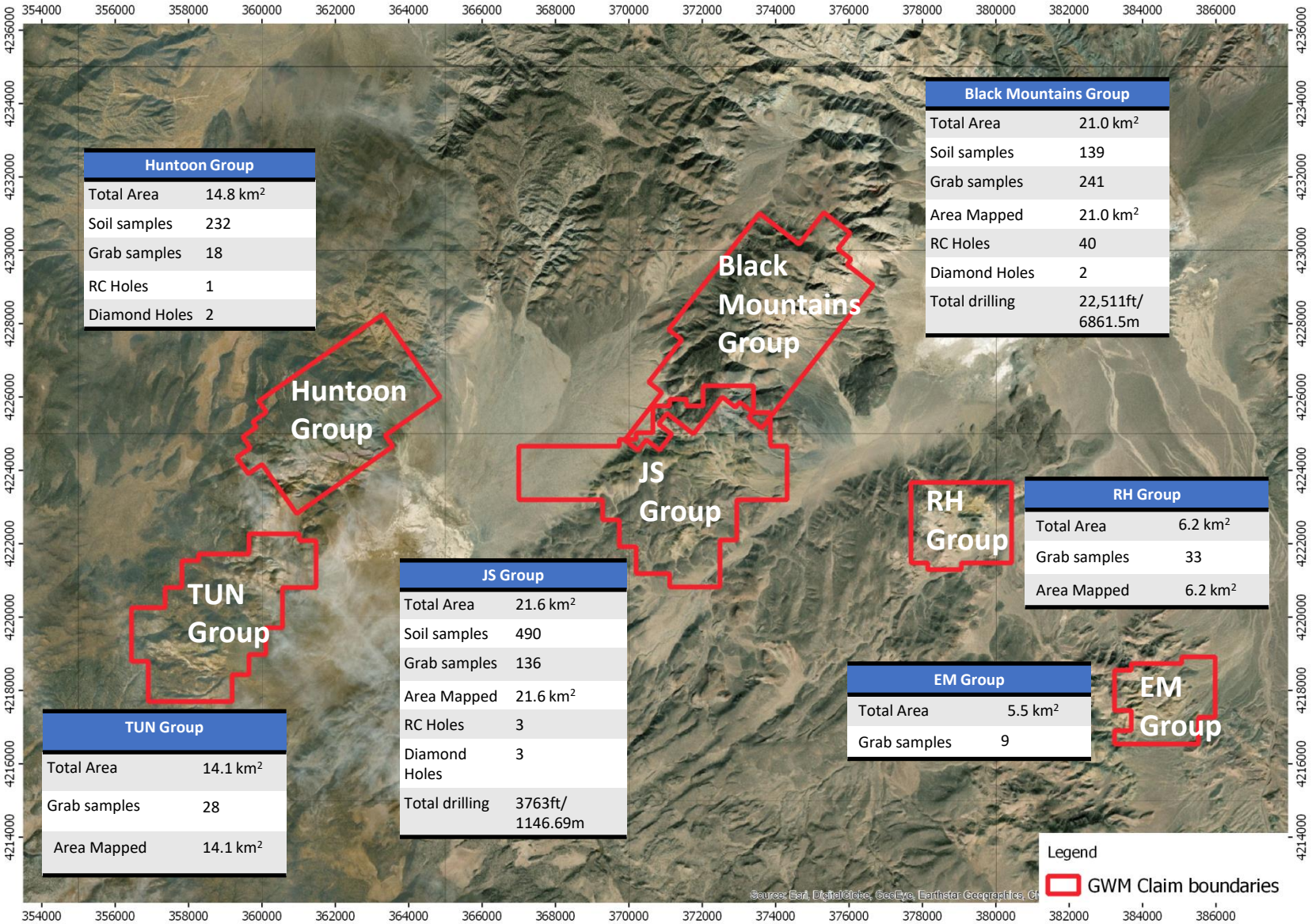


- Great Western has a large tract of acreage in the appropriately named Mineral County, Nevada
- Rugged, mountainous terrain means that there are still large areas that are under explored
- Mineral County is rich in gold, silver and copper. Great Western's six distinct concession areas offer the potential for exploiting (1) long-term, world-class copper deposits and (2) short term gold and silver deposits
- Great Western's licence areas are well positioned within the Walker Lane Trend – a complex zone of regional faulting within the larger east California shear zone
- The Walker Lane Trend contains numerous large historic mineral deposits, such as the Comstock Lode (Silver) and the Anaconda Copper Mine (Yerington) and new large-scale projects such as Pumpkin Hollow (Copper)

Walker Lane Trend



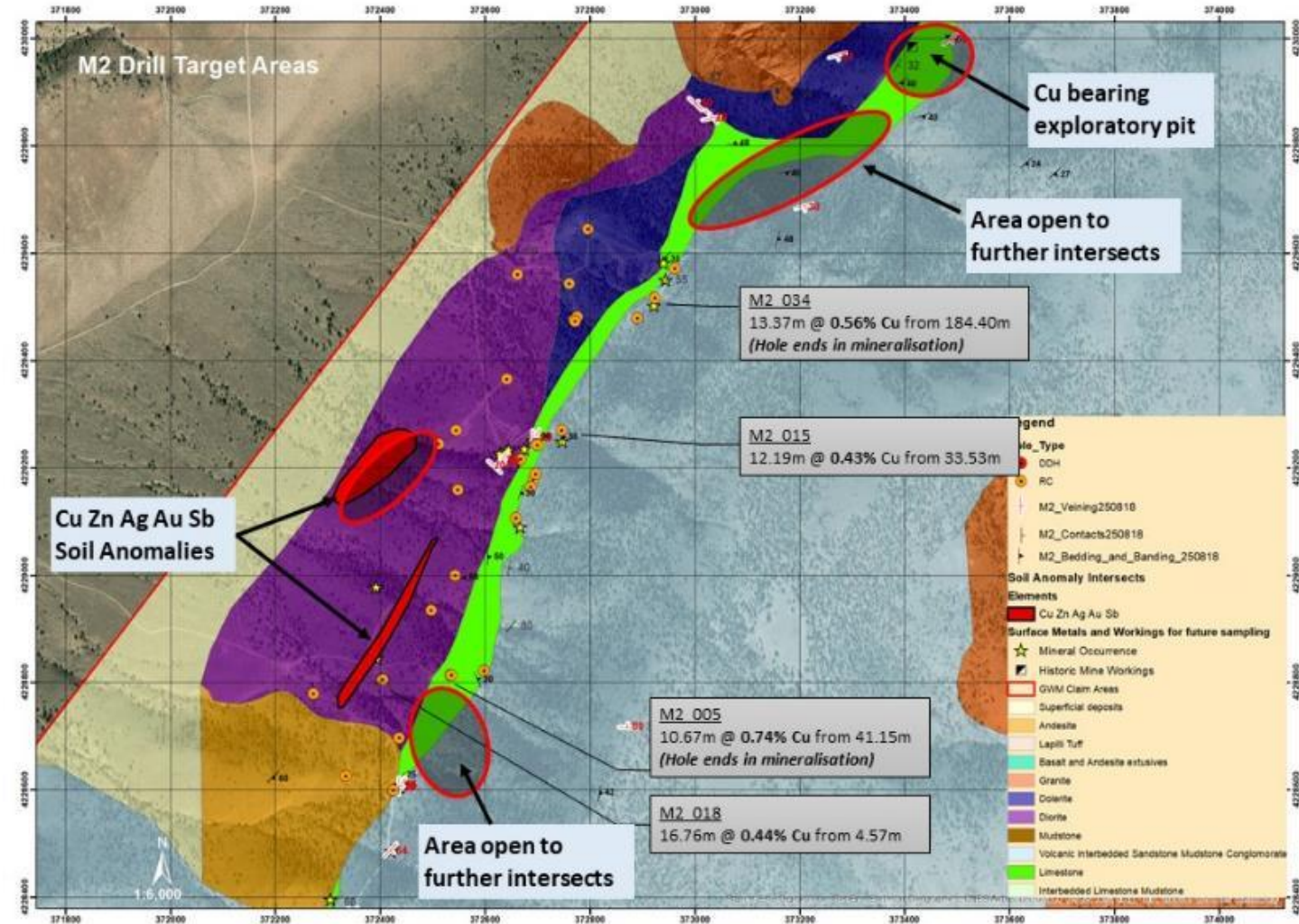
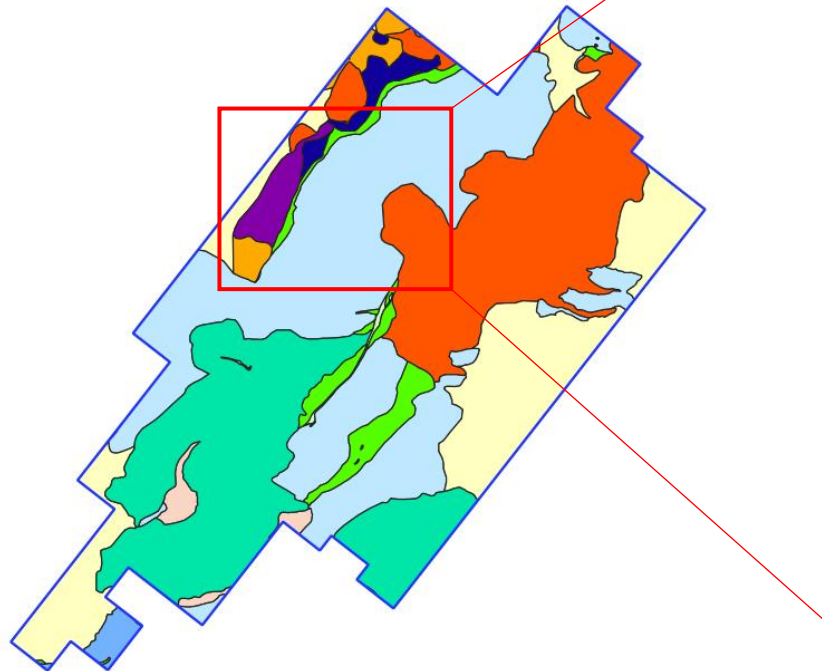
GWM Licence Areas and Operation Stats



Black Mountains Group – M2 Copper Project



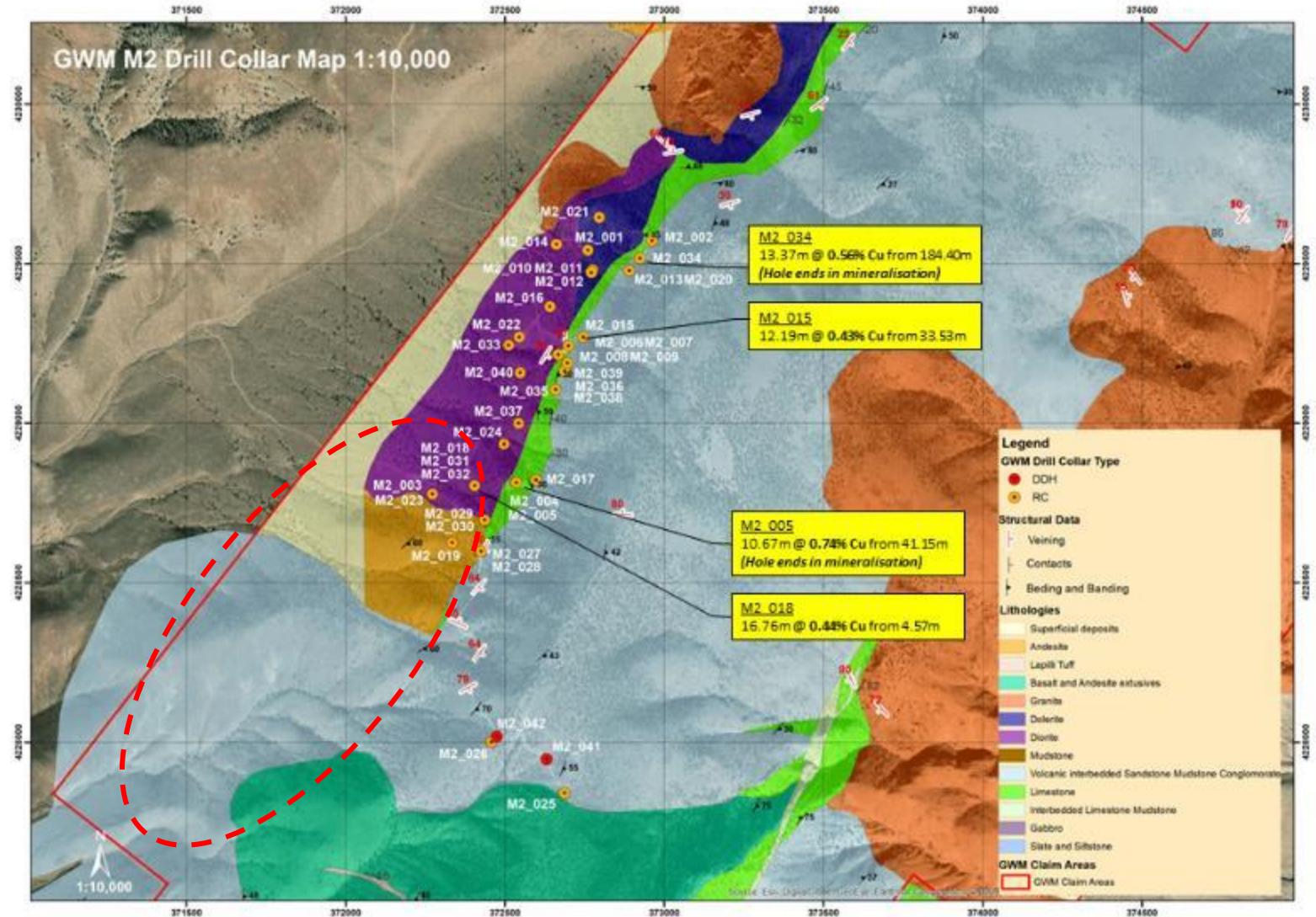
- Indicated and Inferred Mineral Resource, prepared in accordance with JORC guidelines
- Current total Resource of 4.3Mt @ 0.45% Cu, for 19kT of Cu metal (at a 0.20% Cu cut-off)
- The M2 Copper project is open down dip towards the SE, and also along strike both NE and SW.



Black Mountains Group – M2 deep target



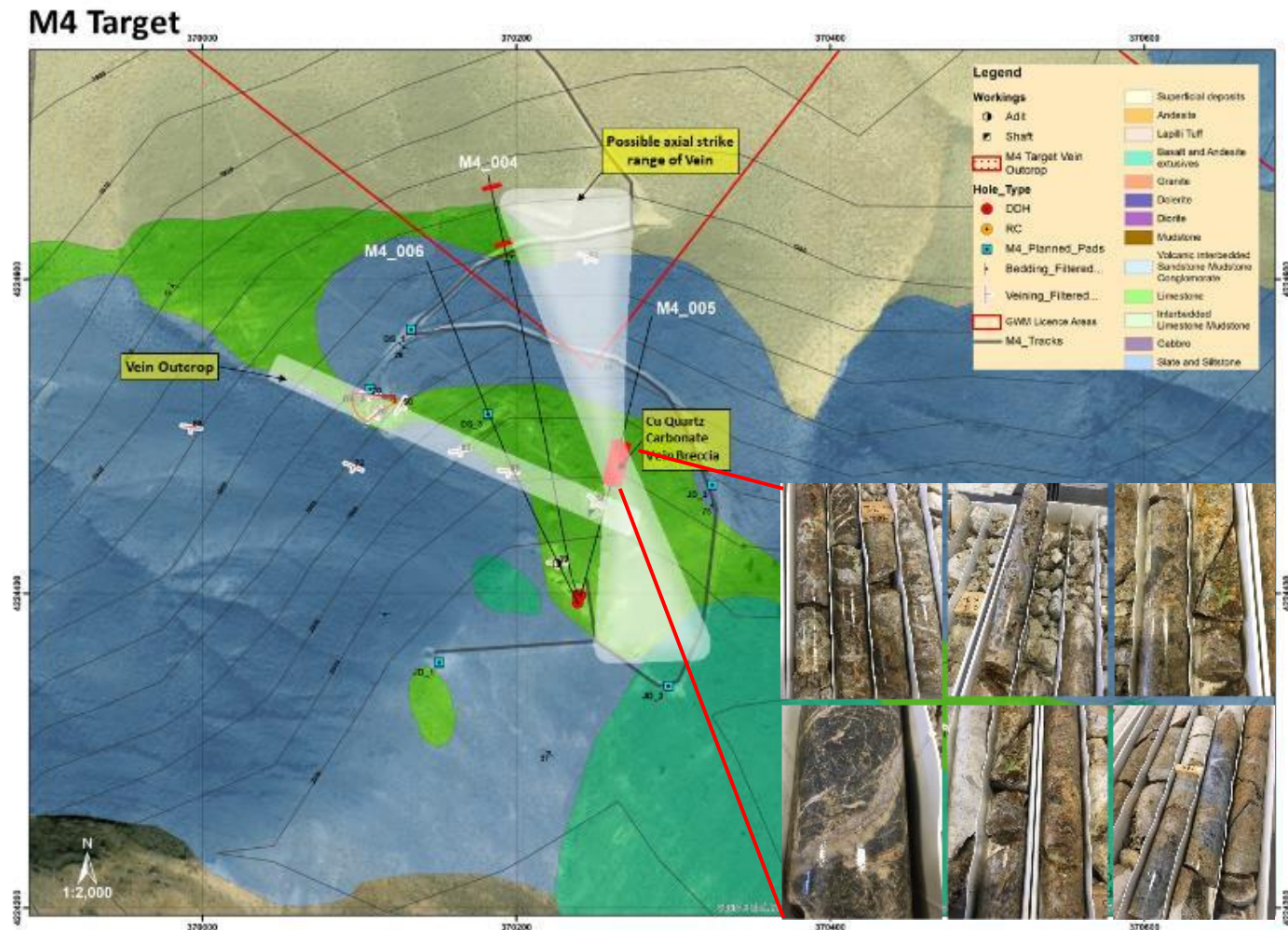
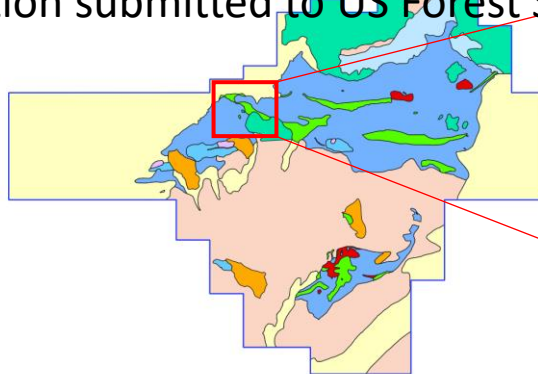
- Target is a deeply buried zone within the diorite, down plunge from the current M2 oxide Cu Resource
- The target could potentially extend the current M2 Resource a further 500m along strike
- Target thickness could range from 10m to 100m
- The total target zone covers an area of approximately 2.5km², which could host a deposit in the range of 15MT to 200MT
- Due to difficult ground conditions encountered the deep diorite target has not yet been reached
- Two further bore holes planned for Autumn 2019. Drill permit application in final stages of preparation for submission to US Bureau of Land Management.



JS Group – M4 Copper Project



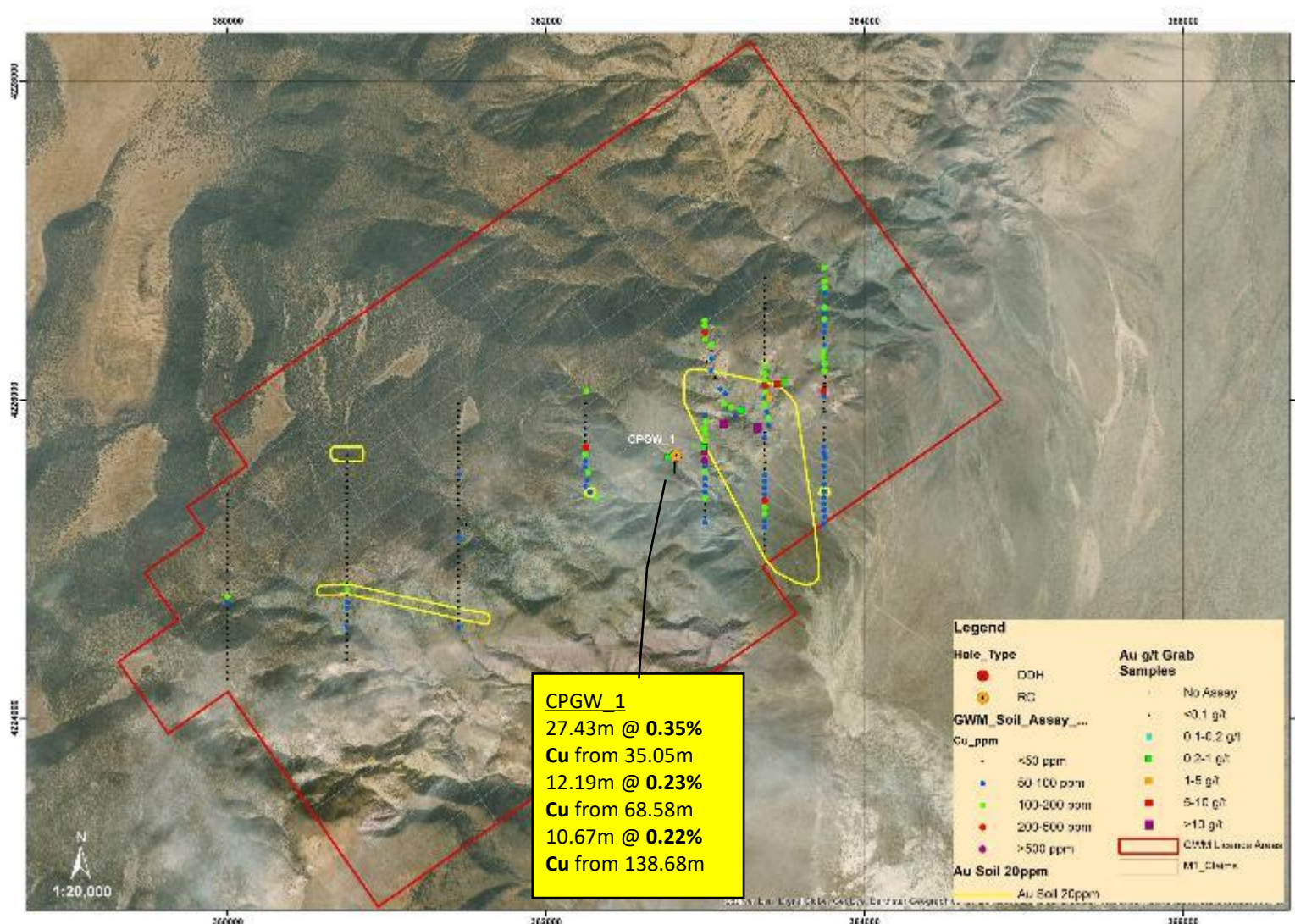
- Three diamond holes drilled in 2018 to test beneath outcrops of cupriferous vein and silicic alteration.
- One hole, M4_005, hit a large quartz-copper breccia vein at 106.2m. The intercept comprised 43.0m @ 0.24% Cu, including 1.8m @ 0.74% Cu from 121m.
- The breccia vein, along with other veins mapped at surface, could be offshoot structures in the roof of a buried sulphide ore body.
- Further six bore holes to test both the extent of the breccia veining and the buried IP anomaly planned for Summer 2019. Drill permit application submitted to US Forest Service.



Huntoon Group – M1 Copper Project



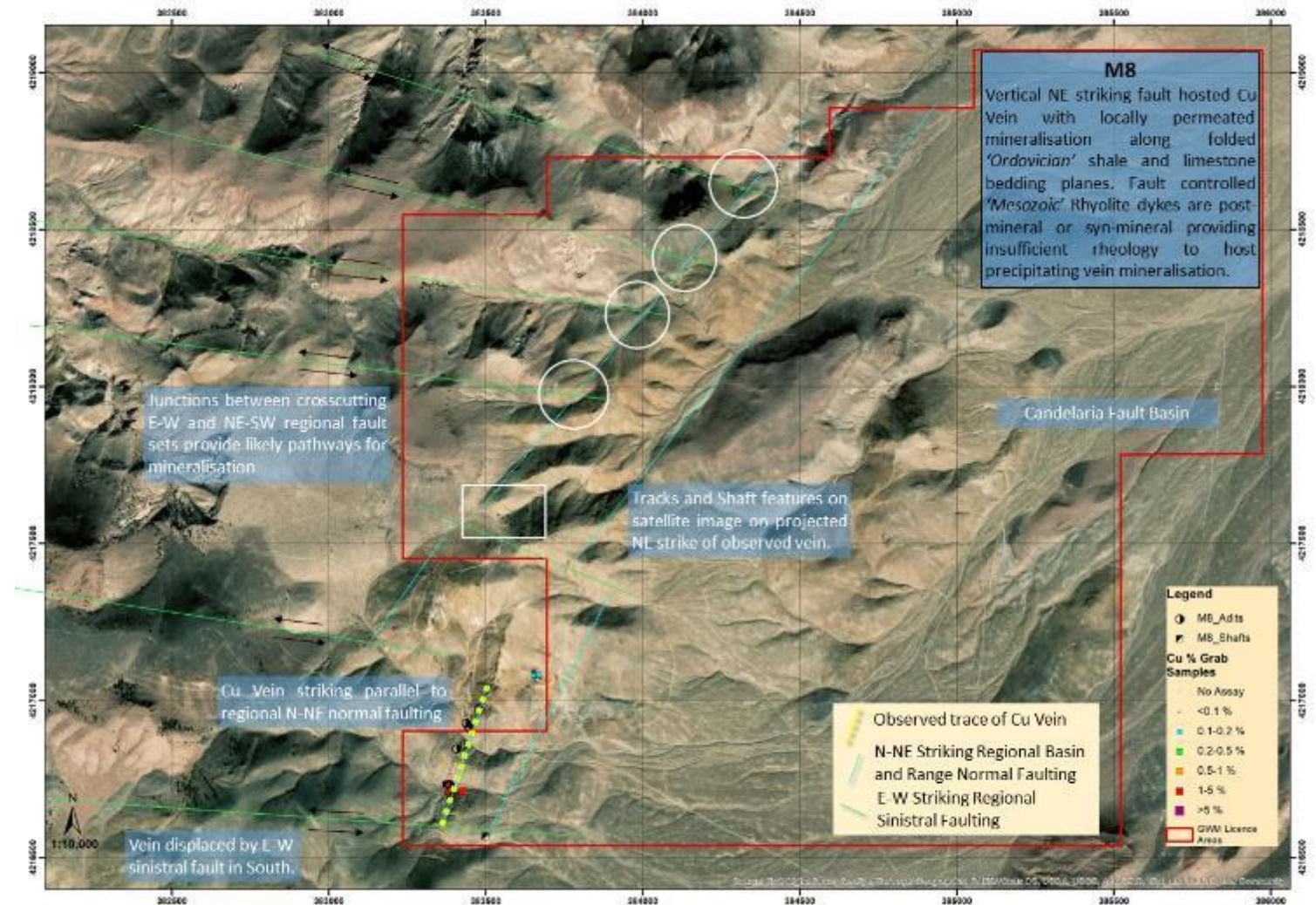
- Single RC hole drilled in June 2018 – CPGW_1
- The RC hole was designed to test the strong Cu anomaly detected in the soil sampling, assuming a dominant trend of NW-SE
- Best result of 27.4m @ 0.35% Cu from 35.1m, including 7.6m @ 0.70% Cu from 36.6m.
- Grade-thicknesses, along with host lithologies, bear many similarities to the mineralisation seen at M2



EM Group – M8 Eastside target



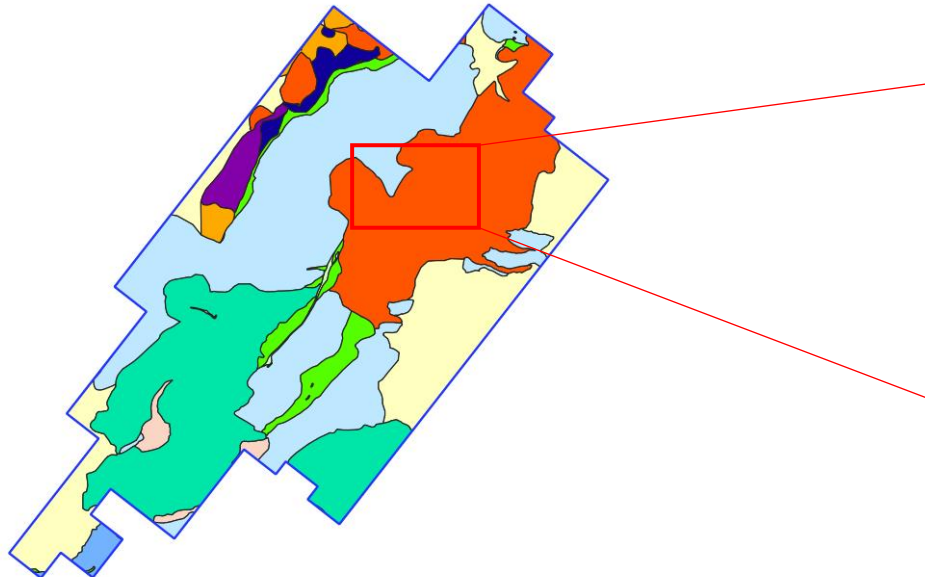
- Historical NE trending mineral workings at the Eastside Mine indicate a substantial mineralisation event.
- Photo imagery indicates presence of crosscutting WNW-ESE strike slip faults
- Junctions between the opposing fault trends provide prospective traps for mineralisation
- Mapping and soil sampling program planned for June 2019, concentrating on likely mineralised fault corridors.



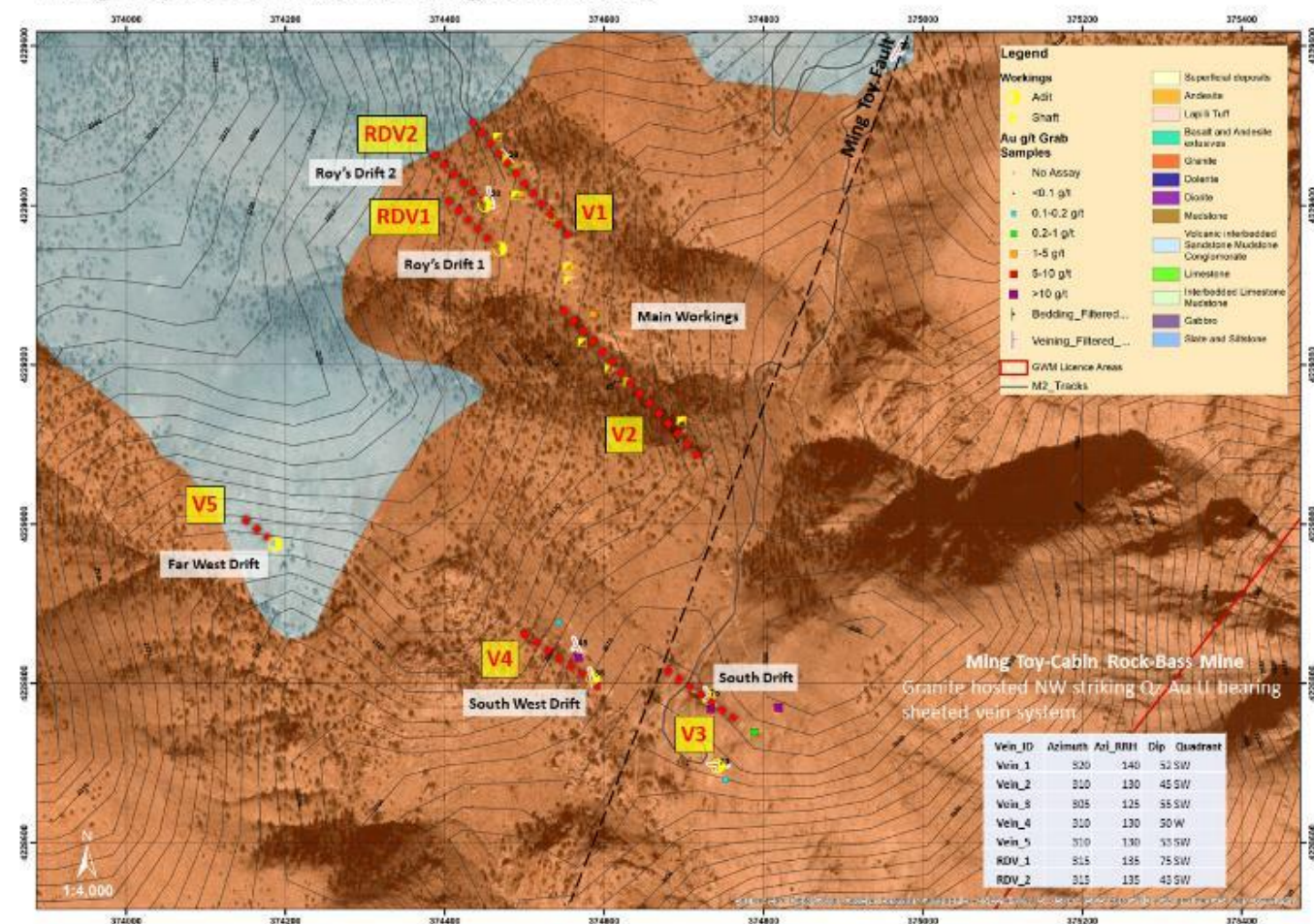
Black Mountains Group – Mineral Jackpot target



- Geological mapping indicates presence of mineralised sheeted quartz veins in host granite, prospective for narrow vein, high grade precious metals.
- Grab sampling of spoil dumps from former workings carried out in 2015 by Great Western yielded results of 5.6 g/t Au and 19.1 g/t Au
- Historic geological report points to at least 7 subparallel lodes, prospective for Au-Ag-U mineralization in both the quartz veining, and the surrounding altered vein selvage
- Historical production has left numerous residual shafts and adits covering an area of approximately 0.5km²



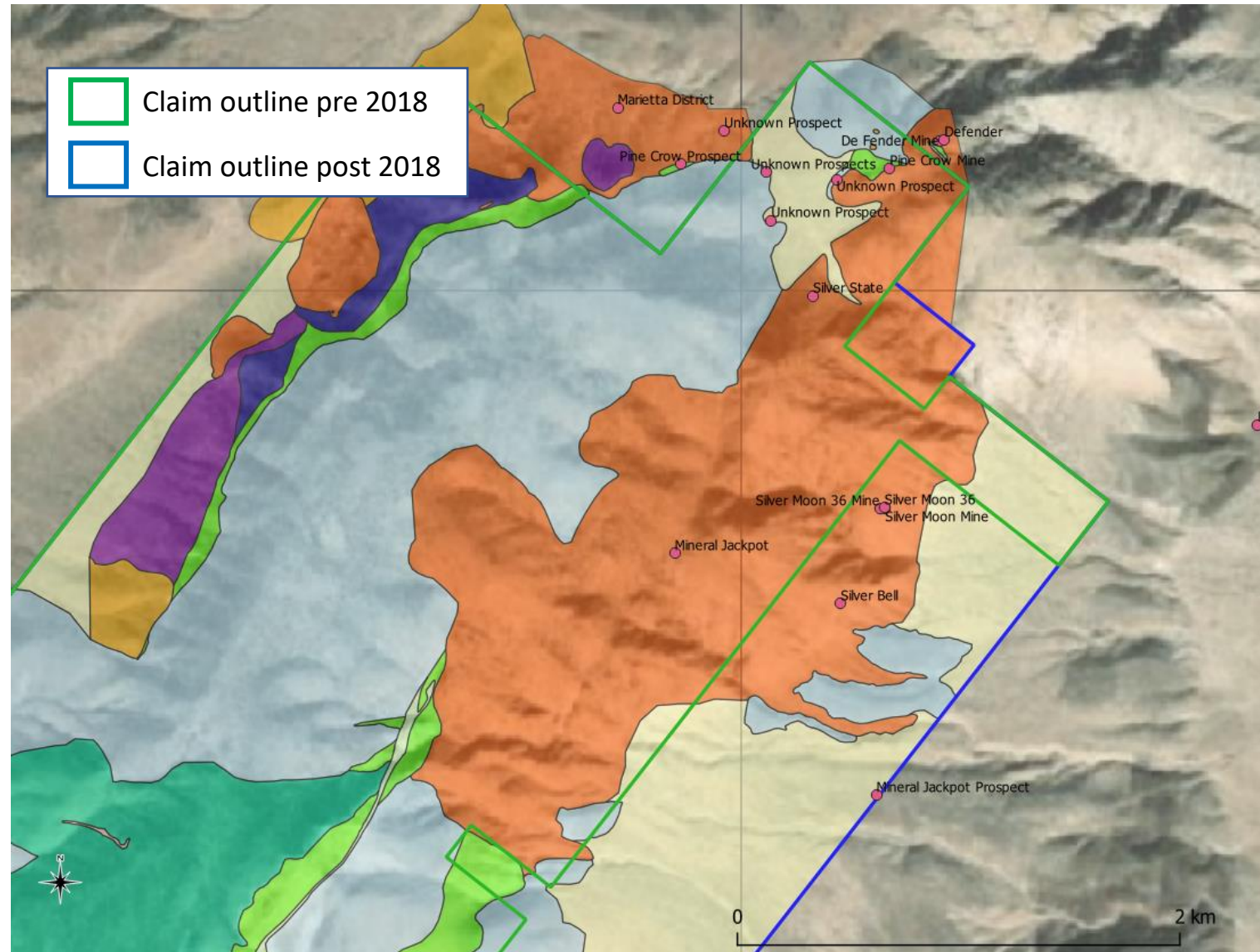
Ming Toy-Bass Mine Workings and Veins



Black Mountains Group – Silver Moon prospect



- 66 claims added in 2018 to the Eastern side of the Black Mountains Group
- These claims cover the Silver Moon and Silver Bell prospects – historically worked for Au-Ag-U
- 2018 mapping in the area reveals presence of Dunlap sediments in the south, host of the M2 Cu Resource, and granites in the north, host of the Mineral Jackpot Au-Ag deposits
- Further geological mapping and sampling in progress in order to delineate potential drill targets.
- 8 grab samples in and around the Silver Moon and Silver Bell prospects have been taken in 2019, as a first pass evaluation.



Exploration and Reporting Timetable 2019-2020

- **Now in Progress.** Reconnaissance survey identifying suitable locations for drill pads for M2 deep target drilling and preparation of drill permitting document. Geological mapping and sampling of BM Group-Mineral Jackpot and new claim area, JS Group South, EM Group, TUN Group and RH Group.
- **Summer 2019.** Soil sampling survey over EM, RH, JS and TUN Group. Drilling at M4, subject to final permit approval from US Forest Service.
- **Summer 2019.** Report results of Spring field campaign Mineral Jackpot, JS Group South, TUN Group and RH Group.
- **Autumn 2019.** Follow up drilling at M2 project, subject to permitting approval from US Bureau of Land Management.
- **Autumn 2019.** Report results of mapping and soil sampling programs.
- **Winter 2019.** Collation and review of 2019 field programs.
- **Winter 2019.** Report results of M2 and M4 drilling.
- **Winter 2019/Early 2020.** Prepare permitting documentation for targets borne out of 2019 field programs (BM, JS, EM, RH, TUN).



www.greatwesternmining.com