



GREAT WESTERN MINING CORPORATION PLC
("Great Western", "GWM" or the "Company")

Result of Extraordinary General Meeting

Great Western Mining Corporation PLC (AIM - GWMO, Euronext Growth - 8GW) which is exploring and developing early-stage gold, silver and copper targets in Nevada, announces that at its Extraordinary General Meeting held today, all resolutions were duly passed.

Voting on all resolutions at the Annual General Meeting was conducted by poll and the results are as follows:

Resolution	For	%	Against	%	Vote Total	Vote Total as % of Issued Share Capital	Withheld*
1. To authorise the Share Consolidation	724,687,141	90.85	73,003,992	9.15	797,691,133	7.64	36,353,245
2. To authorise the Subdivision	723,022,163	90.64	74,668,970	9.36	797,691,133	7.64	36,353,245
3. To authorise the increase in the authorised share capital	724,490,824	90.82	73,200,309	9.18	797,691,133	7.64	36,353,245
4. To authorise the creation of a new class of Deferred Shares and the amendment of the memorandum of association	724,687,141	90.85	73,003,992	9.15	797,691,133	7.64	36,353,245
5. To approve the amendment of the articles of association	724,490,824	92.33	60,190,752	7.67	784,681,576	7.52	49,362,802
6. To authorise the Directors to allot relevant securities	724,490,824	90.82	73,200,309	9.18	797,691,133	7.64	36,353,245

* A vote withheld is not a vote in law and is not counted in the calculation of the proportion of votes "For" or "Against" a resolution.

For further information:

Great Western Mining Corporation PLC

Brian Hall, Chairman

+44 207 933 8780

Max Williams, Finance Director

+44 207 933 8780

Davy (NOMAD, Euronext Growth Listing Sponsor & Joint Broker)

Brian Garrahy

+353 1 679 6363

SP Angel Corporate Finance LLP (Joint Broker)

Ewan Leggat/Adam Cowl

+44 203 470 0470

Walbrook PR (PR advisers)

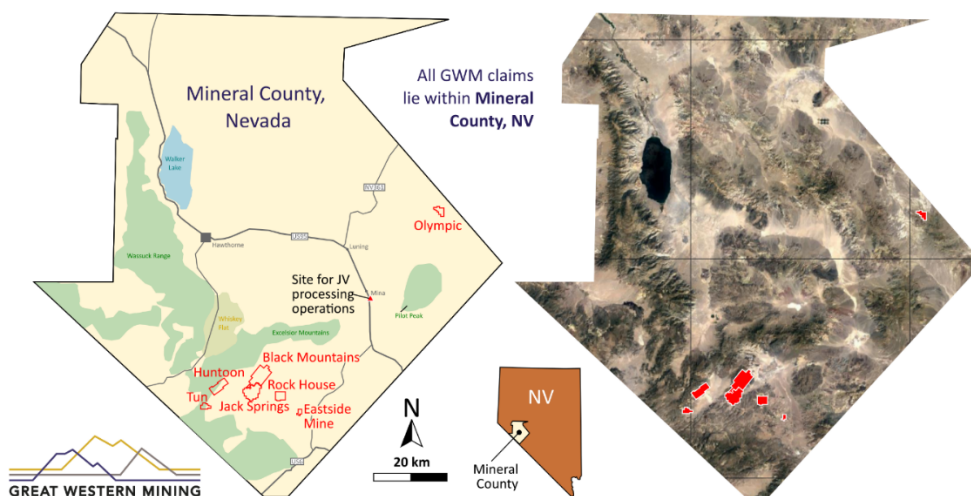
Nick Rome/Joseph Walker

+44 207 933 8783

Notes to Editors

The Company has a large tract of acreage in Mineral County, Nevada. The area consists of rugged, mountainous terrain, which means that large parts of it remain under-explored. Mineral potential is hosted by the regional Walker Lane Structural Belt, the largest structural and metallogenic belt in Nevada, yet one of the least explored in recent times, with gold, silver and copper currently produced in Mineral County. Great Western has seven distinct concession areas which offer the potential for exploiting (1) short term gold and silver deposits and (2) long-term, world-class copper deposits.

Six of the Company's properties are in the west of Mineral County and the seventh and most recent acquisition, the Olympic Gold Project, is in the east of the county, some 50 miles from the main group. All the Company's claims are 100% owned. Claims at the Eastside Mine Group have been contributed to a pooling agreement with Bronco Creek Exploration, Inc. and in addition the Company participates in the Huntoon Mine Area Cooperation Agreement with landowner-neighbour Crowne Point Resources with whom it shares resources. Great Western's small exploration team is supported by locally based consultants and contractors.



The state of Nevada is one of the world's most mining friendly jurisdictions. While tightly regulated and environmentally conscious, Nevada welcomes the mining industry. Great Western takes care to ensure that its claims are maintained in good standing and all regulations observed.

There are numerous gold and silver prospects on the Company's acreage, including extensive historic mine workings which offer the opportunity for secondary recovery. The Company is party to a 50-50 joint venture known as Western Milling LLC which is constructing a mill to process pre-mined material for secondary recovery of gold and silver.

Furthermore, through extensive drilling over a five-year period, GWM has established a Mineral Resource on its first target area known as M2, of 4.3 million tonnes at 0.45% copper, for 19,000 tonnes of contained copper metal. This resource has been independently reported in accordance with JORC guidelines.

GWM has also established an Inferred Resource Estimate of 31,000 tonnes grading 1.6 g/t gold and 3.0 g/t silver in tailings associated with the OMCO Mine at the Olympic Gold Project. Additionally, exploration targets have been independently reported as follows:

- 3,400 – 6,400 tonnes grading between 0.5 and 1.2 g/t Au and 1.2 and 2.1 g/t Ag in the substrate beneath the tailings volume at the Olympic Mine.
- 9,000 – 12,000 tonnes grading between 0.9 and 2.4 g/t Au and 2.0 and 5.1 g/t Ag in a coarse stockpile at Olympic Mine.
- 4,200 – 7,700 tonnes grading between 40 and 140 g/t Ag and 0.3 and 0.3 g/t Au in spoil heaps at Mineral Jackpot.